

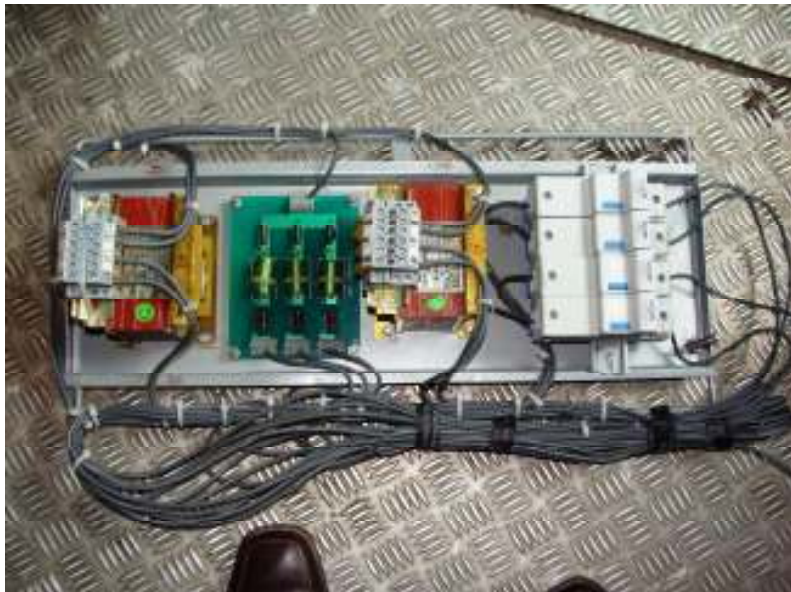
Utilization of Overhead Electric Power for Air conditioning and Train Lighting of Shatabdi trains over Indian Railways

The requirement of power for Train Lighting and Air conditioning of passenger coaches over Indian Railways is being made from three different systems namely Self-Generation System, End-on-Generation System and Head-on-Generation system.

After extensive trials and improvements on the design, commercial service of HOG scheme involving one 3 phase electric loco and 12 passenger coaches & two power cars have been started from **21.02.2011** between New Delhi-Kalka & back in train no. 12005/06 NDLS-KLK Shatabdi Express. In this scheme the power supply is received directly from locomotive through couplers and DG sets kept off to be used during emergency only. The supply from locomotive is 750V, 3 phase. The advantages of this scheme are as under:

- No noise (DG sets will not be used)
- Saving of HSD oil (about 700 Ltrs per round trip)
- Economical (saving of about 18,000.00 per round trip)
- Pollution free environment at Rly. station etc. (No smoke as DG sets will not be used)

Presently this system will be in operation on train no. **12005/06 NDLS-KLK Shatabdi Express**. Three more rakes have been planned for conversion with this scheme and may take around one year for introduction.



Photographs showing modifications in HOG Coach